



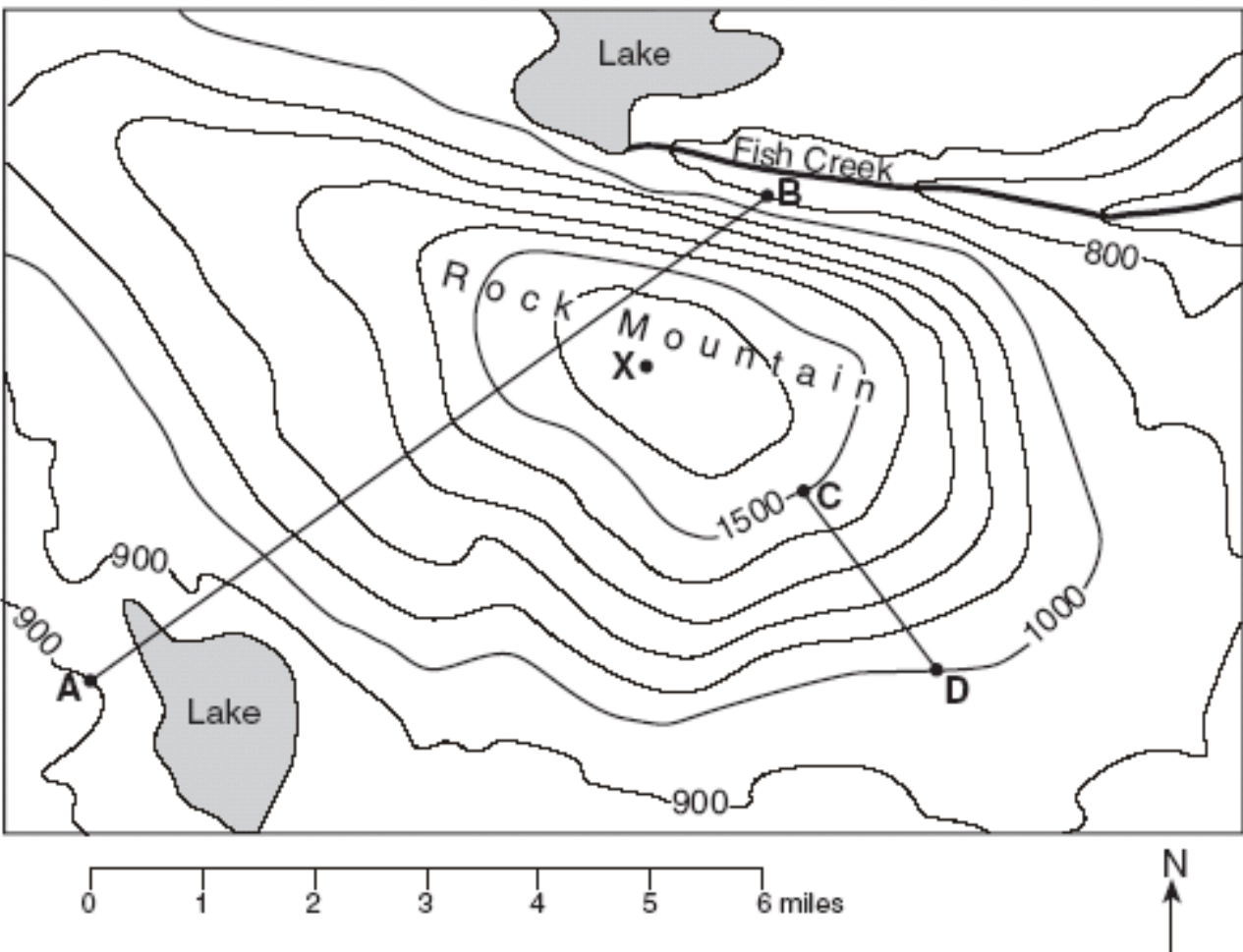
Earth Science

Assignment # _____

Name: _____ Date: _____ Period: _____

Topographic Map Worksheet

Base your answers to the following questions on the topographic map below. Points A, B, C, D, and X represent locations on the map. Elevations are measured in feet.



1. What is the elevation of each of the following points?

A. _____ B. _____ C. _____ D. _____

2. What is the contour interval of this map? _____

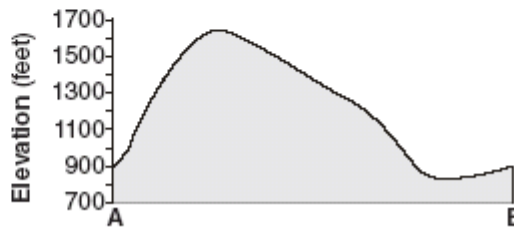
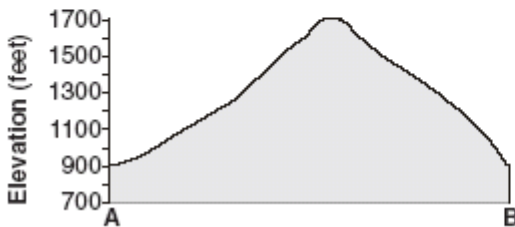
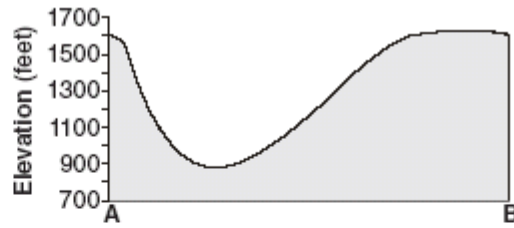
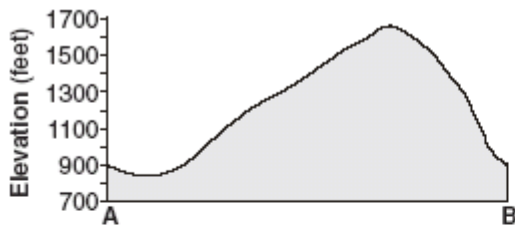
3a. Calculate the Gradient between C and D.

3b. Calculate the Gradient between A and B.

4. In what direction does Fish Creek Flow? _____

5. What is the elevation of Point X.? _____

6. Which cross section best represents the profile along straight line AB?



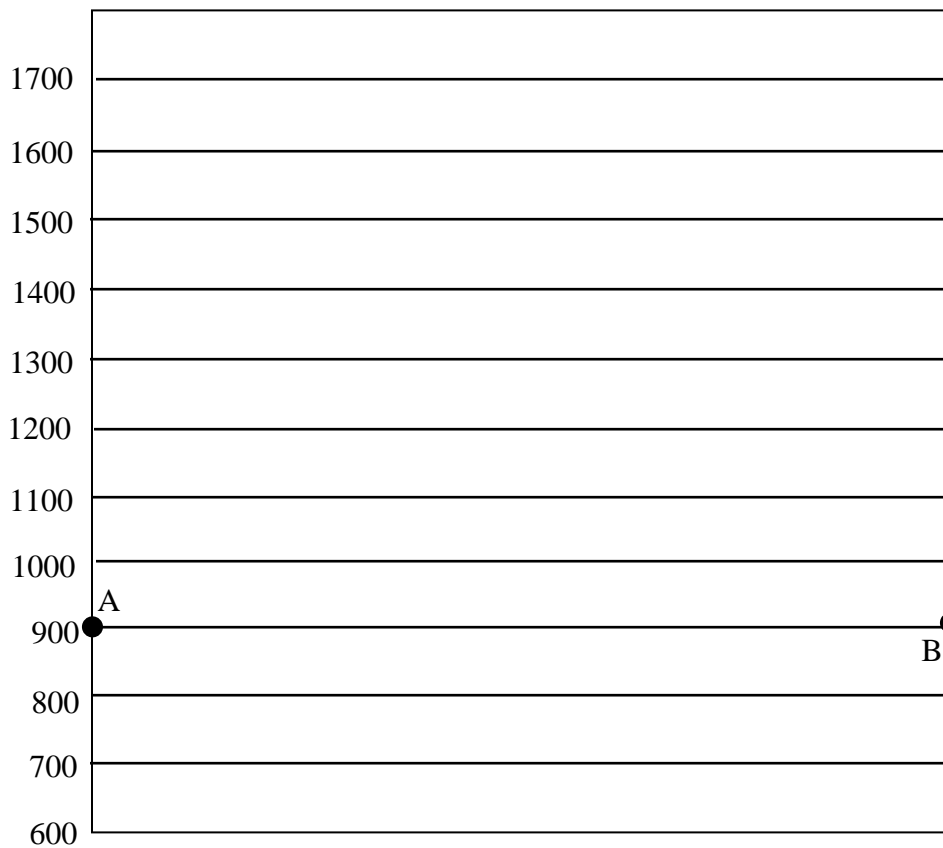
7. Which side of Rock Mountain is the steepest? (compass direction) _____

8. Which side of Rock Mountain has the gentlest slope? (compass direction) _____

9. On the grid, construct a topographic profile from point *A* to point *B* by following the directions below.

a. Plot the elevation along line *AB* by marking with a *●* point where a contour line is crossed by line *AB*. Points *A* and *B* have been plotted for you.

b. Complete the profile by correctly connecting the plotted points with a smooth, curved line.



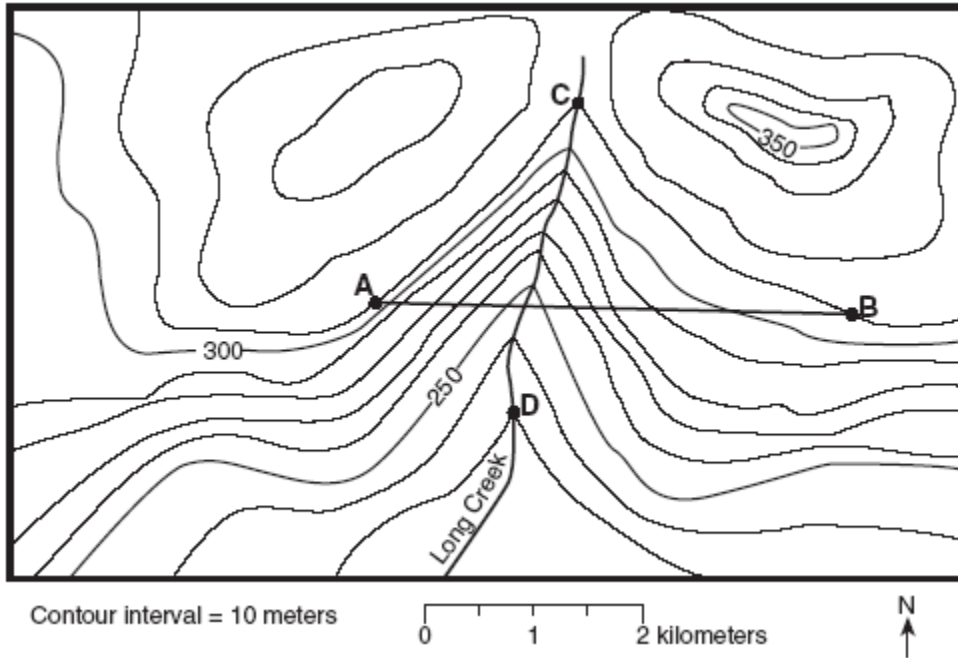


Earth Science

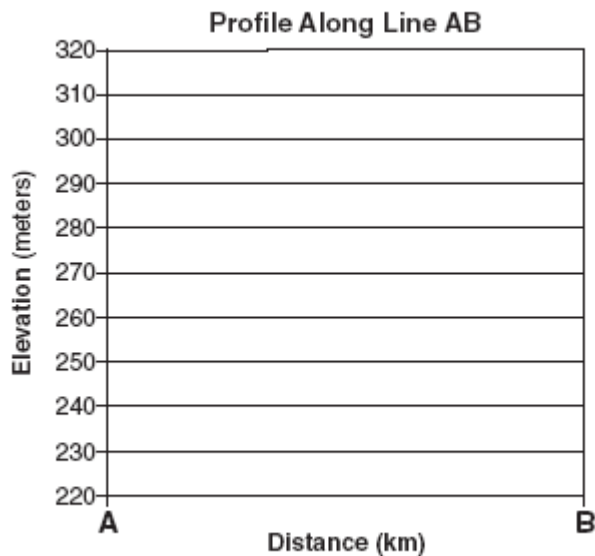
Assignment # _____

Name: _____ Date: _____ Period: _____

Topographic Map Worksheet #2



64 On the grid below, construct a topographic profile along line *AB*, by plotting a point for the elevation of *each* contour line that crosses line *AB* and connecting the points with a smooth, curved line to complete the profile. [2]



65. Calculate the gradient between C and D:



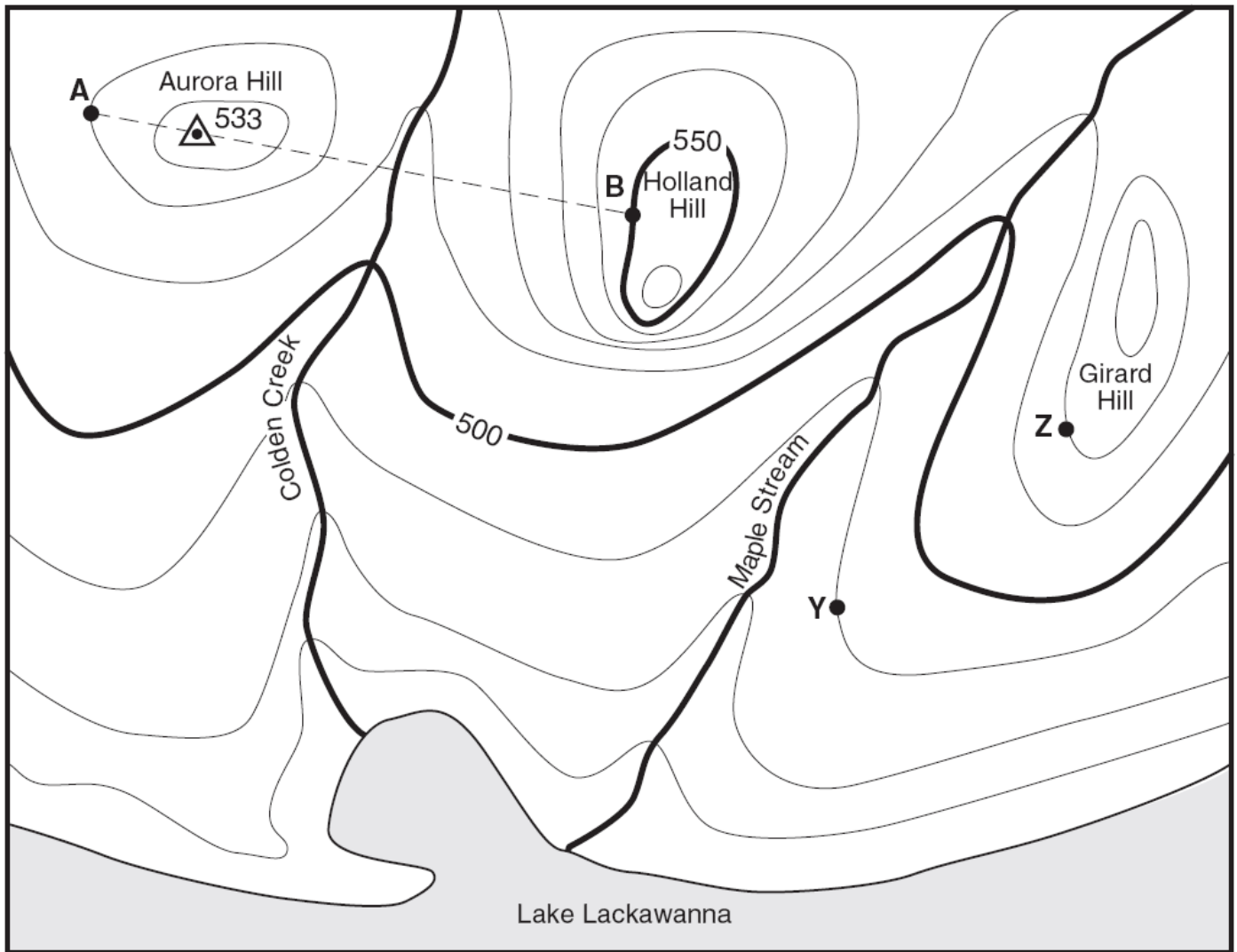
Earth Science

Assignment # _____

Name: _____ Date: _____ Period: _____

Topographic Map Worksheet #3

Base your answers to questions 51 through 54 on the topographic map below. Points A, B, Y, and Z are reference points on the topographic map. The symbol \triangle 533 represents the highest elevation on Aurora Hill.



Contour Interval 10 feet

0 2 4 6 miles



51 State the general compass direction in which Maple Stream is flowing. [1]

52 Calculate the gradient between points Y and Z on the map, and label the answer with the correct units. [2]

53 Describe the evidence shown on the map that indicates that the southern side of Holland Hill has the steepest slope. [1]

54 On the grid, construct a topographic profile from point *A* to point *B* by following the directions below.

a Plot the elevation along line *AB* by marking with an *X* each point where a contour line is crossed by line *AB*. Points *A* and *B* have been plotted for you. [2]

b Complete the profile by correctly connecting the plotted points with a smooth, curved line. [1]

